

SPIDER SECURITY PRODUCTS

PHYSICAL SECURITY REDEFINED.™



A&E SPECIFICATIONS

SPIDER POWER SUPPLY

PART NUMBER: **55P-PWR-1205**

PRODUCT DETAILS

Spider Power Supply: 12VDC @ 5Amps

This is an all-purpose 12 Volt DC regulated & individually fused power supply. Able to amply power any 12VDC device, but perfect for security applications: Controllers, Keypads, Card Readers, REXs, Motion Sensors, Door Sounders, and more!

One of the best features about this power supply is that its door panel bears an illuminated LED status indicator system:

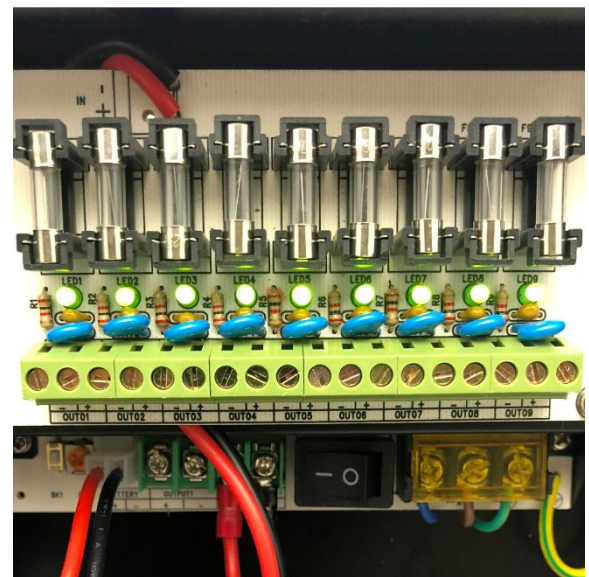
At a quick glance: service techs and customers can identify problems easily — such as if the AC Power Input is out, or if the Backup Battery is low on charge... All without having to open up the door!

This helps to promote 'system uptime' and also lowers maintenance costs, since problems can be diagnosed quickly!



SPECIFICATIONS AND INFO

- Enclosure Dimensions: 9.00"H x 7.50"W x 3.00"D.
- Wall Mountable NEMA I Enclosure with Black Finish.
- ON/OFF power toggle switch allows safe & easy servicing.
- Regulated/Adjustable DC Voltage Output (Range of 12-14VDC).
- Prewired connection pigtail for 12VDC Battery Backup connection.
- (9) Independently Fused Outputs with total 5 Amps output capacity.
[These include 9 'fast-acting' type fuses, each rated at 1.5 Amps per]
- Panel Status Indicators: AC Power Input, DC Out, Charger, Low Batt.
- Includes (4) Knockouts for quick 1/2" conduit or grommet inlets.
- 1/2" Knockout Locations: (2) on Bottom, (1) KO on Left & (1) on Right.
- AC Input Requirements: 100-240VAC @ 50/60hz.
- This product is made in China.
- Package includes (2) Keys.



CRUCIAL INFO AT: WWW.SPIDERPROTECT.COM