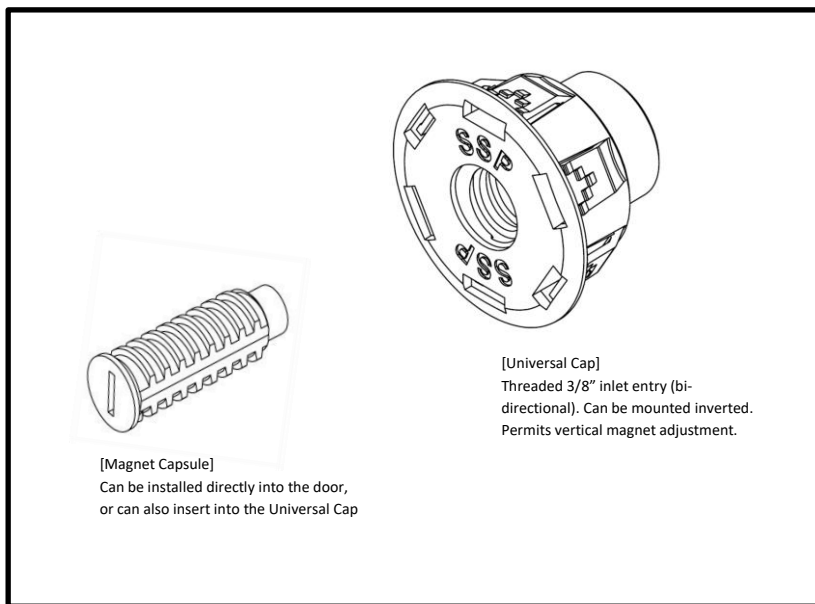
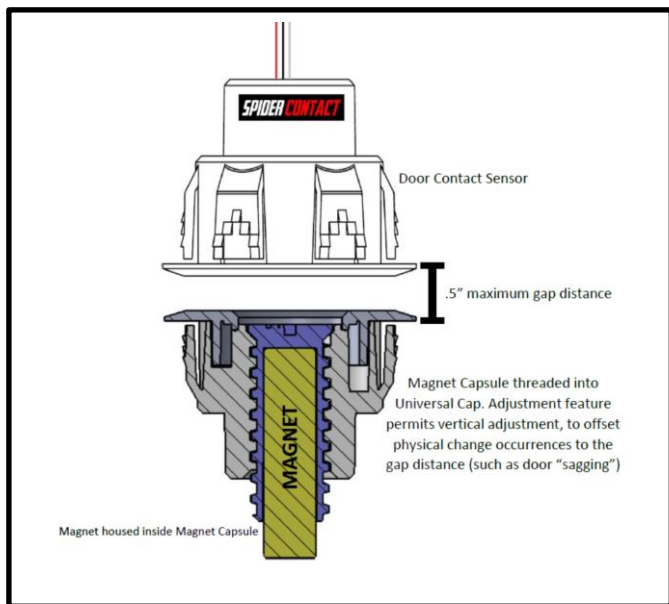




Installation Manual for: Spider Door Contact (Part #: SSP-SDC-101-x) Version V1.00

Safety Disclaimers:

- A- Always wear safety gloves and goggles when working with power tools and electrical wires.
- B- Please follow all safety manuals of your power tool and drill bit manufacturers.
- C- Our products are designed for the purposes for which they are intended. No liability is accepted by SSP for incorrect use of our products, and SSP cannot be held responsible for any damage to personnel, property or equipment when using them. Incorrect use may also invalidate our warranty.
- D- CAUTION: OUR MAGNETS ARE VERY POWERFUL. TAKE PRECAUTIONS TO AVOID THE MAGNETIC ATTRACTION OF SHARP TOOLS AND TO AVOID INJURY FROM THE PINCHING FORCE BETWEEN THE MAGNET AND FERROUS METALS OR OTHER MAGNETS.



[DOOR CONTACT INSTALLATION INSTRUCTIONS]

Step 1: Identify, Confirm and Mark mounting surfaces (No drilling yet)

- a. [On the Door Frame]: Identify a location placement for the Contact. Ideally, 6" from the edge but please confirm and adjust. Mark an "X" with a pencil.
- b. [On top of Door, where the Contact will line up]: Ensure there is ample space for magnet placement. If there is obstruction, go back to Step #1A above.

Step 2: Recommended Drilling Procedure

- a. Door Frame Drilling: Pilot with 1/8" then 1/4" Drill Bit. Enlarge to a 1" hole using a stepbit or holesaw. Drill hole through stud behindframe for cable pass-thru.

Step 3: Cabling & Wiring Connections

- a. Fish your door contact "home run" cable down the wall, and out of the 1" hole.
- b. If needed, install an "End-of-Line" Resistor Pack to match your system requirements.
- c. Connect wires per the color-coded chart below. Use proper splicing techniques (i.e. Solder, Crimp-Splice Connectors, Wire Nuts).

Wiring Color Codes: (SPST models might only contain 2 of these 3 colors)

BLACK WIRE	Common
RED WIRE	Normally Open Output Signal
WHITE WIRE	Normally Closed Output Signal

- d. Insulate all wiring connections with electrical tape, preferably in an "in-line" fashion. Press the Spider Door Contact flush into the 1" hole cavity.

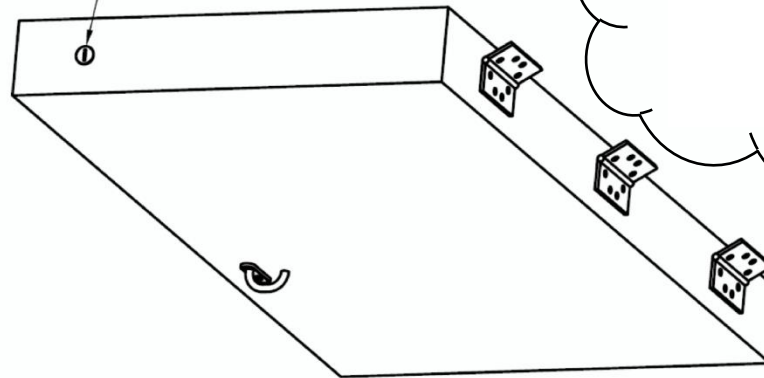
[DOOR MAGNET INSTALLATION INSTRUCTIONS]: 4 Door Type Applications Accommodated

1. Door Type #1: Wooden Door with Solid Top:

- Identify & mark the door's "center-to-center" location, with respect to the Spider Door Contact.
- Drill a 3/8" hole, approximately 1.25" deep. Vacuum debris out of hole.
- Apply clear RTV silicone inside the 3/8" hole cavity. Insert the Magnet Capsule.
- Make sure the gap distance between Magnet and Contact does not exceed 1/2". Wipe off excess RTV. Test signals.

1)

Magnet Capsule directly into top of door, by drill a 3/8" hole into the wood, about 1" deep



2. Door Type #2: Metal Door with Solid Top:

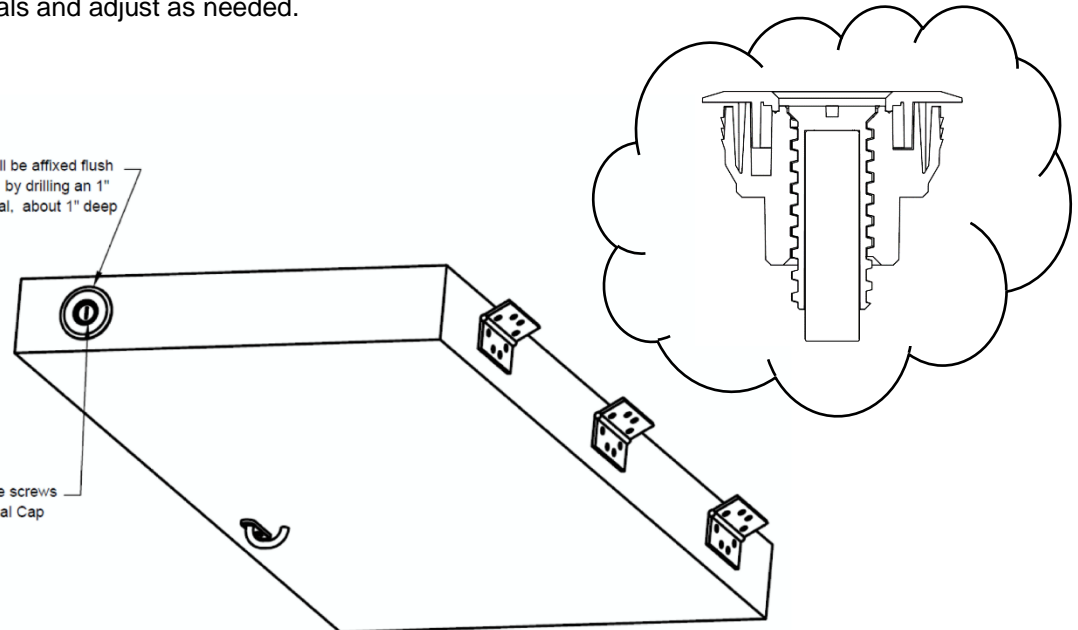
- Identify & mark the door's "center-to-center" location with respect to the Spider Door Contact.
- Drill a 1" hole, approximately 1.25" deep.
- Apply clear RTV silicone around the 1" hole.
- Insert the Universal Cap.
- Apply clear RTV silicone inside the 3/8" threaded hole of the Universal Cap.
- Using a Slotted Screwdriver: Thread the Magnet Capsule into the Universal Cap (clockwise) until you reach an ideal gap distance in between Magnet Capsule and Door Contact. Ensure that the Magnet distance to the Door Contact does not exceed 1/2". Test signals and adjust as needed.

1)

Universal Cap will be affixed flush onto top of door, by drilling an 1" hole into the metal, about 1" deep

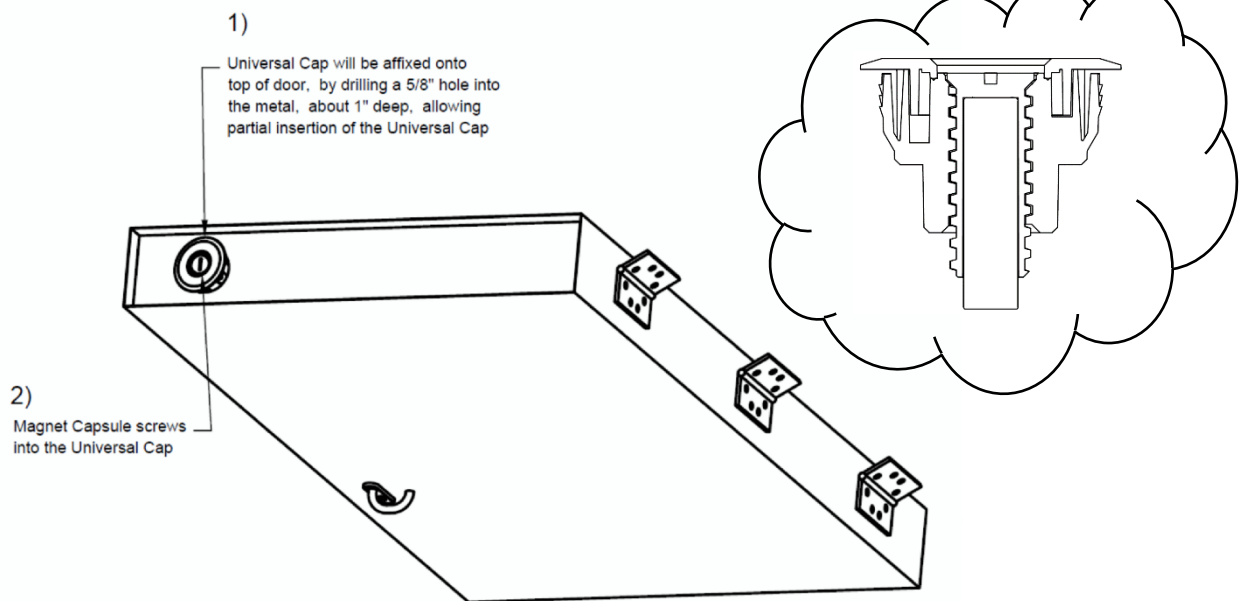
2)

Magnet Capsule screws into the Universal Cap



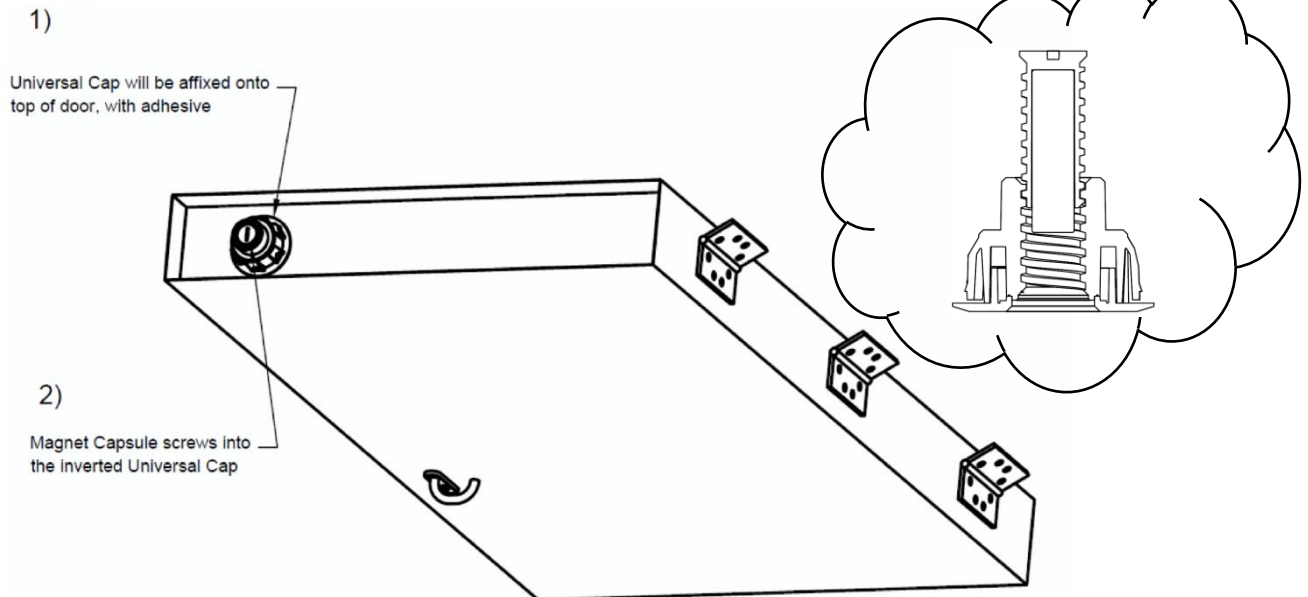
3. Door Type #3: Metal Door with Narrow-channeled Top (Channel not less than 1/2" deep)

- a. Identify & mark the door's "center-to-center" location with respect to the Spider Door Contact.
- b. Drill a 5/8" hole, approximately 3/4" deep.
- c. Apply clear RTV silicone around the 5/8" hole.
- d. Insert the narrow 5/8" end of the Universal Capsule.
- e. Apply clear RTV silicone inside the 3/8" threaded hole of the Universal Cap.
- f. Using a Slotted Screwdriver: Thread the Magnet Capsule into the Universal Cap (clockwise) until you reach an ideal gap distance in between Magnet Capsule and Door Contact. Ensure that the Magnet distance to the Door Contact does not exceed 1/2". Test signals and adjust as needed.



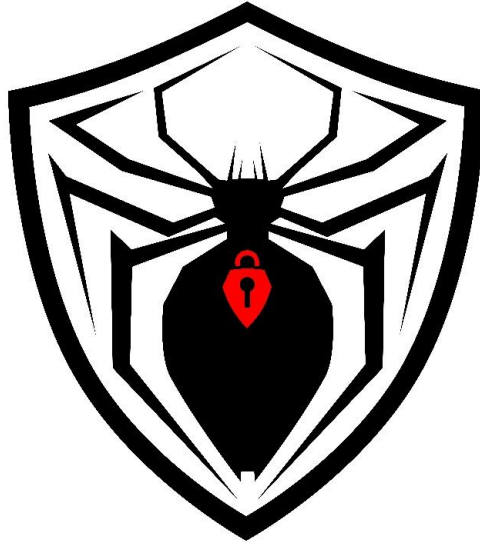
4. Door Type #4: Metal Door with Deep-channeled Top (Channel not less than 7/8" deep)

- a. Identify & mark the door's "center-to-center" location with respect to the Spider Door Contact.
- b. Drill a 3/8" hole, approximately 1/4" deep. (The protruding magnet end of the Magnet Capsule will insert here).
- c. Apply ample clear RTV silicone around the 3/8" hole, approximately 1" in total diameter.
- d. Invert the Universal Capsule and press face-down onto the door, center-to-center to the 3/8" hole drilled. Allow silicone to fully cure before proceeding.
- e. Apply clear RTV silicone inside the 3/8" threaded hole of the Universal Cap.
- f. Using a Slotted Screwdriver: Thread the Magnet Capsule into the Universal Cap (clockwise) until you reach an ideal gap distance in between Magnet Capsule and the Spider Door Contact. Ensure that the Magnet Capsule distance to the Spider Door Contact does not exceed 1/2". Test signals and adjust as needed,



Miscellaneous Notes:

1. *Anti-Bypass Feature: Magnetism sensed from any other direction other than the Door Magnet (while the door is closed), will cause an immediate alarm.*
2. *A gap no greater than 1/8" (3.17mm) is required for compliance with UL634 Level 2, C634 high security standards.*
3. *For UL compliance, the installation must be in a metal frame with a 5/8" (minimum) door stop; modules must have an operating gap no greater than 1/8".*



SPIDER SECURITY PRODUCTS 26120 Eden Landing Road, #4, Hayward, CA 94545, USA ~ Made in China ~ **Email: Support@spiderprotect.com**
WWW.SPIDERPROTECT.COM **All Rights Reserved**

CRUCIAL INFO AT WWW.SPIDERPROTECT.COM